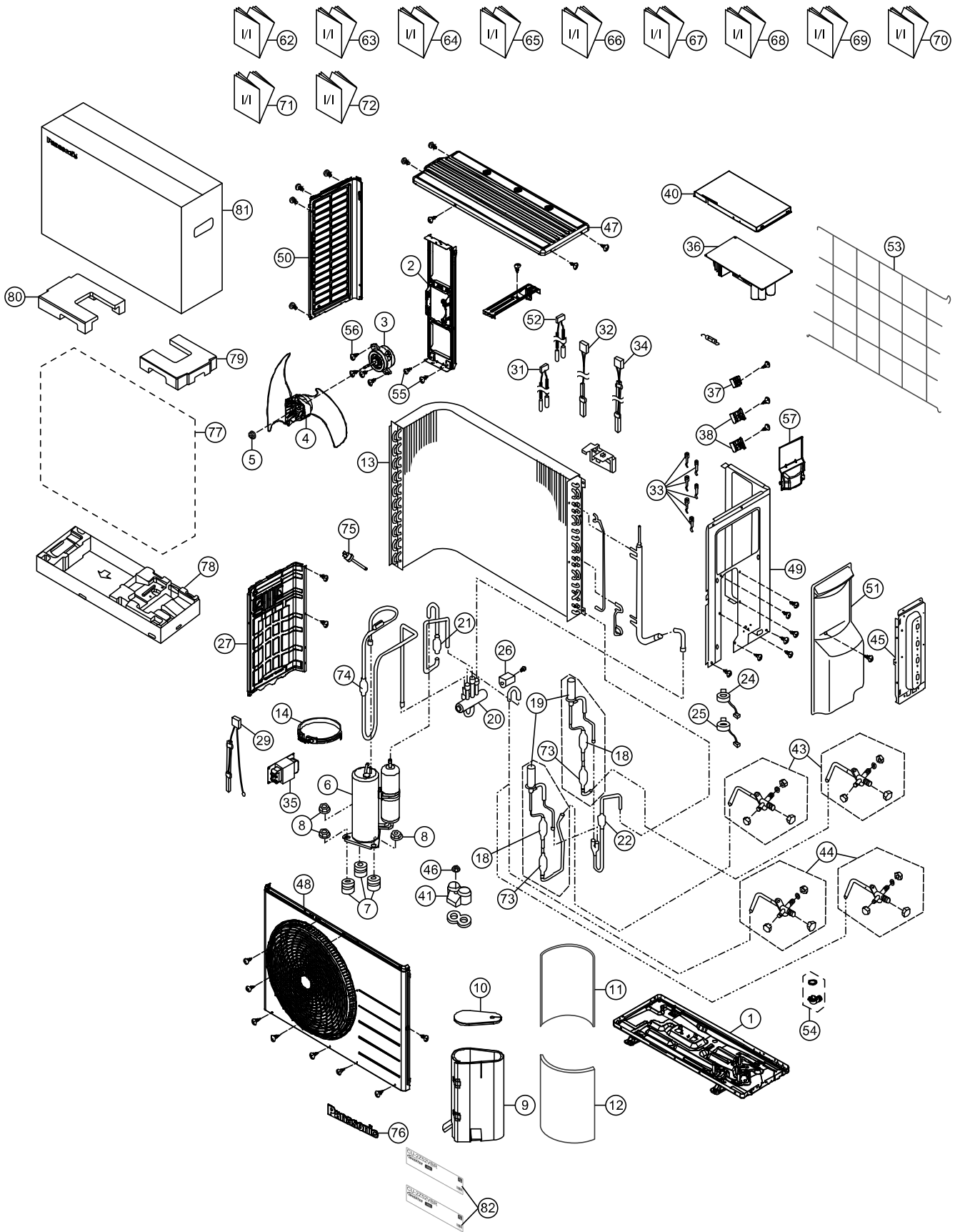


# 4. Exploded View and Replacement Parts List

## 4.1 CU-2Z35TBE CU-2Z41TBE CU-2Z50TBE



Note  
The above exploded view is for the purpose of parts disassembly and replacement.  
The non-numbered parts are not kept as standard service parts.

SAFETY	REF. NO.	DESCRIPTION & NAME	Q'TY	CU-2Z35TBE	CU-2Z41TBE	CU-2Z50TBE	REMARK
	1	CHASSIS ASSY	1	CWD52K1277	←	←	
	2	FAN MOTOR BRACKET	1	CWD541167	←	←	
⚠	3	FAN MOTOR	1	L6CBYYL0218	←	←	O
	4	PROPELLER FAN ASSY	1	CWH03K1066	←	←	
	5	NUT - PROPELLER FAN	1	CWH56053J	←	←	
⚠	6	COMPRESSOR	1	9RD132XAC21	←	←	O
	7	ANTI - VIBRATION BUSHING	3	CWH50077	←	←	
	8	NUT - COMPRESSOR MOUNT	3	CWH561096	←	←	
	9	SOUND PROOF MATERIAL (BODY)	1	CWG302954	←	←	
	10	SOUND PROOF MATERIAL (TOP)	1	CWG302630	←	←	
	11	SOUND PROOF MATERIAL	1	CWG302806	←	←	
	12	SOUND PROOF MATERIAL	1	CWG302807	←	←	
	13	CONDENSER CO.	1	ACXB32C12700	←	ACXB32C02640	
⚠	14	CRANKCASE HEATER	1	CWA341044	←	←	
	18	STRAINER	2	CWB111024	←	←	
	19	EXPANSION VALVE	2	CWB051029	←	←	
	20	4-WAYS VALVE	1	CWB001064	←	←	O
	21	STRAINER	1	CWB111004	←	←	
	22	STRAINER	1	CWB111080	←	←	
⚠	24	V-COIL COMPLETE (CN-EV1 WHITE)	1	CWA43C2579	←	←	O
⚠	25	V-COIL COMPLETE (CN-EV2 YELLOW)	1	CWA43C2580	←	←	O
⚠	26	V-COIL COMPLETE (4-WAY VALVE)	1	CWA43C2585	←	←	O
	27	SOUND PROOF BOARD	1	CWH151364	←	←	
⚠	29	SENSOR - COMPLETE (AIR TEMP SENSOR CN-TH1)	1	CWA50C3078	←	←	O
⚠	31	SENSOR - COMPLETE (GAS PIPE TEMP CN-TH4)	1	CWA50C3070	←	←	O
⚠	32	SENSOR - COMPLETE (DEFROST SENSOR CN-TH2)	1	CWA50C3069	←	←	O
	33	HOLDER SENSOR	6	CWH32143	←	←	
⚠	34	SENSOR - COMPLETE - TANK	1	CWA50C2894	←	←	O
⚠	35	REACTOR	1	G0C193J00004	←	←	O
⚠	36	ELECTRONIC CONTROLLER - MAIN	1	ACXA73C20750R	ACXA73C20760R	ACXA73C20770R	O
⚠	37	TERMINAL BOARD ASSY (L, N)	1	CWA28K1162	←	←	O
⚠	38	TERMINAL BOARD ASSY (1, 2, 3)	2	CWA28K1161	←	←	O
	40	CONTROL BOARD COVER	1	CWH131473	←	←	
	41	TERMINAL COVER	1	CWH171039A	←	←	
	43	3-WAYS VALVE (LIQUID)	2	CWB011418	←	←	O
	44	3-WAYS VALVE (GAS)	2	CWB011081J	←	←	O
	45	HOLDER COUPLING	1	CWH351253	←	←	
	46	NUT - TERMINAL COVER	1	CWH7080300J	←	←	
	47	CABINET TOP PLATE	1	ACXE03-02880	←	←	
	48	CABINET FRONT PLATE CO.	1	ACXE06C02860	←	←	

SAFETY	REF. NO.	DESCRIPTION & NAME	Q'TY	CU-2Z35TBE	CU-2Z41TBE	CU-2Z50TBE	REMARK
	49	CABINET SIDE PLATE CO.	1	ACXE04C05640	←	←	
	50	CABINET SIDE PLATE (LEFT)	1	ACXE04-09310	←	←	
	51	CONTROL BOARD COVER - COMPLETE	1	CWH13C1300	←	←	
	52	SENSOR - COMPLETE (LIQUID PIPE TEMP CN-TH3)	1	CWA50C3071	←	←	O
	53	WIRE NET. RESIN NET	1	CWD041200A	←	←	
	54	BAG - COMPLETE	1	CWG87C900	←	←	
	55	SCREW - BRACKET FAN MOTOR	2	ACXH55-07140	←	←	
	56	SCREW - FAN MOTOR MOUNT	4	CWH55252J	←	←	
	57	CONTROL BOARD COVER	1	CWH131595	←	←	
	62	INSTALLATION INSTRUCTION	1	ACXF60-06551	←	←	
	63	INSTALLATION INSTRUCTION	1	ACXF60-06561	←	←	
	64	INSTALLATION INSTRUCTION	1	ACXF60-06571	←	←	
	65	INSTALLATION INSTRUCTION	1	ACXF60-06581	←	←	
	66	INSTALLATION INSTRUCTION	1	ACXF60-06591	←	←	
	67	INSTALLATION INSTRUCTION	1	ACXF60-06601	←	←	
	68	INSTALLATION INSTRUCTION	1	ACXF60-06611	←	←	
	69	INSTALLATION INSTRUCTION	1	ACXF60-06621	←	←	
	70	INSTALLATION INSTRUCTION	1	ACXF60-06631	←	←	
	71	INSTALLATION INSTRUCTION	1	ACXF60-06641	←	←	
	72	INSTALLATION INSTRUCTION	1	ACXF60-06651	←	←	
	73	DISCHARGE MUFFLER	2	ACXB12-00610	←	←	
	74	DISCHARGE MUFFLER	1	ACXB12-01180	←	←	
	75	HEATING PRESSURE SWITCH	1	CWA101013	←	←	
	76	PANASONIC BADGE	1	CWE373439	←	←	
	77	BAG	1	CWG861078	←	←	
	78	BASE BOARD - COMPLETE	1	CWG62C1144	←	←	
	79	SHOCK ABSORBER	1	CWG713415	←	←	
	80	SHOCK ABSORBER	1	CWG713416	←	←	
	81	C.C. CASE	1	ACXG50-48870	←	←	
	82	MODEL LABEL	2	ACXF82-22590	ACXF82-22600	ACXF82-22610	

(Note)

- All parts are supplied from PAPAMY, Malaysia (Vendor Code: 00029488).
- "O" marked parts are recommended to be kept in stock.